

*Spare parts suitable for:*  
***MAIRALI***

*Spare parts suitable for coffee machines*



## M Solenoid valves

Scem/Parker



Item	Order	Description
1	370057	cpl., 3 ways, 230V AC
2	370060	cpl., 3 ways, with cable, 230V AC
3	370062	Solenoid square base



Item	Order	Description
1	370059	cpl., 3 ways, 1/4", 230V AC
2	370206	cpl., 2 ways, 230V AC
3	371029	Magnetic coil, 230V AC
4	371033	Magnetic coil, with cable, 230V AC



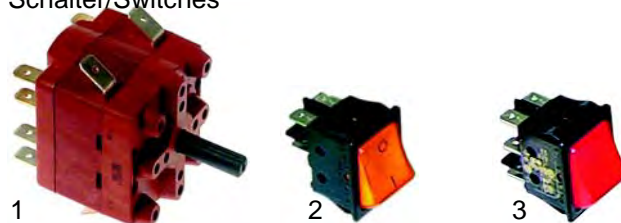
Item	Order	Description
1	371090	Plug
2	371095	O-ring (viton)
3	371100	O-ring (Silicon)

## Pressure switches, thermostats



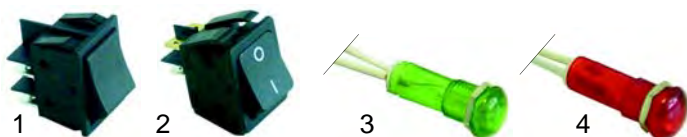
Item	Order	Description
1	541021	Pressure switch, 3 poles
2	390166	Safety thermostat, 3 poles

## Schalter/Switches



Item	Order	Description
1	345157	Main switch
2	301002	Group switch
3	301015	Group switch, DPDT

## Switches, lamps



Item	Order	Description
1	346066	Switch
2	346068	Push button
3	359400	Lamp/green, 8mm, 230V
4	359401	Lamp/red, 8mm, 230V

## Level controller



Item	Order	Description
1	400019	Level controller, RL30/1E-2C/F, 230V
2	400237	Level controller, RL30/1E-2C/8, 230V
3	400020	Level probe, 150mm

## Relays



Item	Order	Description
1	380151	Time relay
2	380134	Relay, DPDT
3	380137	Base, 8 poles

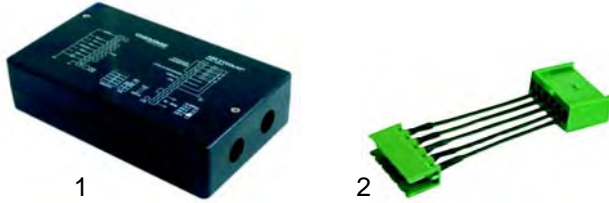


## Flowmeter/Flow-meters



Item	Order	Description
1	400222	Flowmeter, 1/4"
2	400004	Flowmeter, 1/4"
3	400256	Plug
4	400257	Flowmeter turbine
5	400258	Case gasket

## Key push buttons

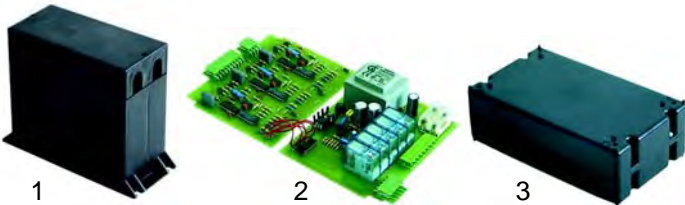


Item	Order	Description
1	400379	Key push button
2	400320	Key push button cable



Item	Order	Description
1	400450	Key push button/cpl.
2	400451	Key push button

## Electronics



Item	Order	Description
1	400316	Electronic box, 2 groups
2	400443	Electronic board
3	400322	Electronic box, 2 - 3 groups

## Elements



Item	Order	Description
1	417003	1 group, 1800W, 230 V

## Elements

With immersion socket



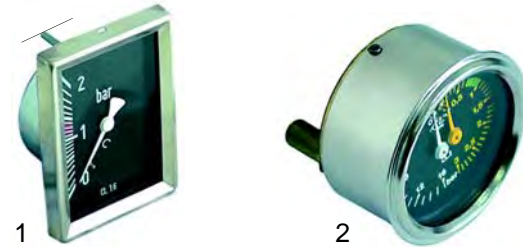
Item	Order	Description
1	417116	1 group, 1800W, 230V
2	417001	2 groups, 2600W, 230 V
3	417109	3 groups, 3700W, 230 V

## Element gaskets



Item	Order	Description
1	528488	Gasket (klingerit)
2	528002	Gasket (teflon)

## Manometers

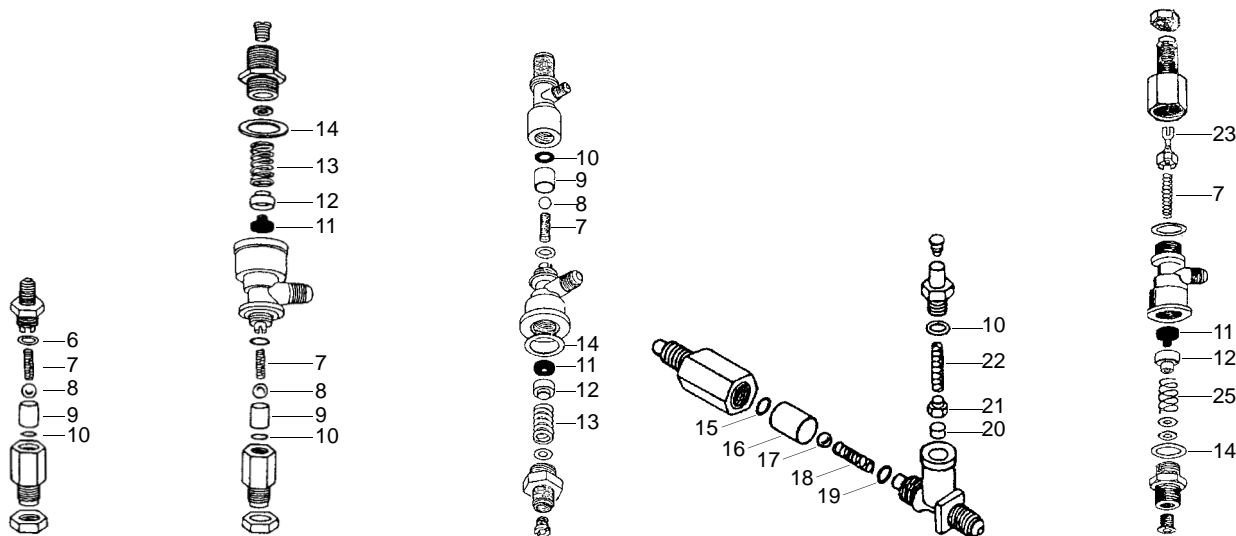


Item	Order	Description
1	541247	Manometer, 0 - 2 bar
2	541208	Manometer, double scale

## Valves



Item	Order	Description
1	529312	Safety valve, 1,8 bar, 3/8"
2	529316	Safety valve/sealed, 1,8 bar, 3/8"
3	529303	Empty valve (stainless steel), 1/4"
4	529361	Cu-gasket, 1/4"
5	529349	Cu-gasket, 3/8"



Item	Order	Description
1	529322	Retention valve
2	529319	Expansion- and retention valve
3	529323	Expansion- and retention valve

Item	Order	Description
4	529321	Expansion- and retention valve
5	529320	Expansion- and retention valve

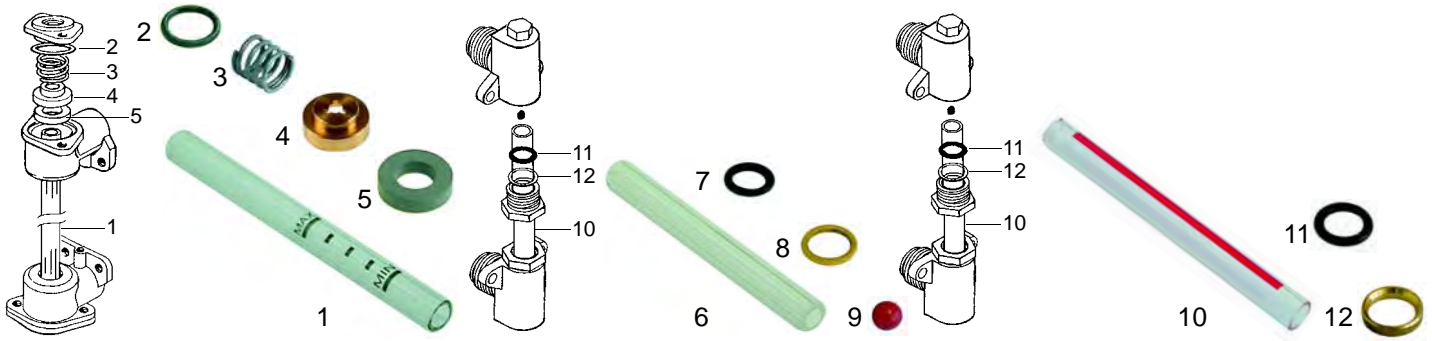


Item	Order	Description
6	529368	O-ring
7	528392	Spring
8	528419	Ball (stainless steel)
9	528768	Bush
10	529476	O-ring
11	528425	Gasket
12	528769	Bush

Item	Order	Description
13	528424	Spring
14	528420	Cu-gasket
15	528478	O-ring (viton)
16	528770	Bush
17	528422	Ball (stainless steel)
18	528421	Spring
19	528771	O-ring

Item	Order	Description
20	528772	Gasket
21	528773	Bush
22	528774	Spring
23	528775	Valve
24	528776	Gasket
25	528777	Spring

## Level glass

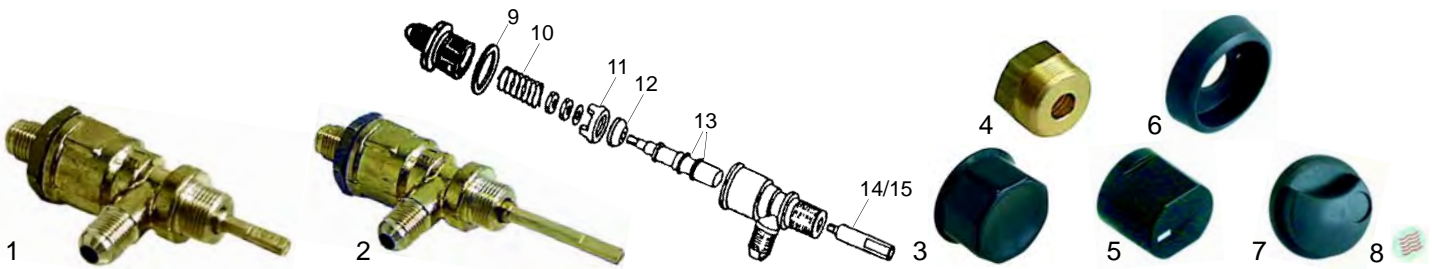


Item	Order	Description
1	529351	Level glass
2	529357	Gasket
3	529356	Spring
4	528778	Bush

Item	Order	Description
5	529354	Gasket
6	529367	Level glass
7	529368	O-ring
8	529369	Washer

Item	Order	Description
9	529355	Plastic ball
10	529387	Level glass
11	528583	O-ring
12	528682	Washer

## Water inlet valve



Item	Order	Description
1	529524	Water inlet valve/cpl.
2	529525	Water inlet valve/cpl., long axle
3	111020	Knob

Item	Order	Description
4	528779	Union nut
5	111068	Knob
6	111069	Rosette

Item	Order	Description
7	111098	Knob
8	111103	Cap



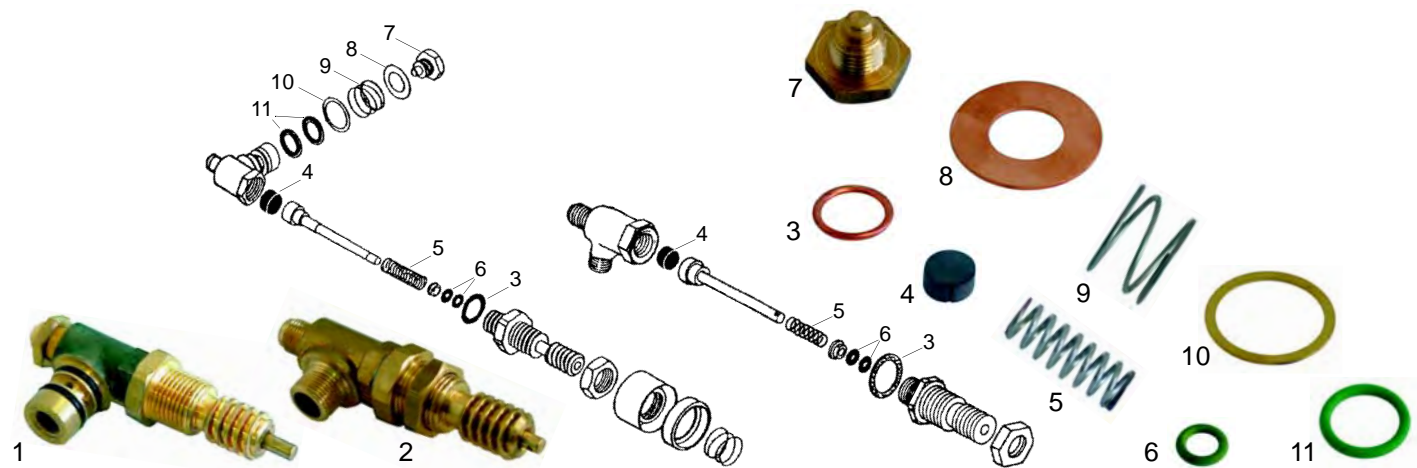
Item	Order	Description
9	528420	Cu-gasket
10	528423	Spring
11	528595	Bush

Item	Order	Description
12	528596	Gasket
13	528469	O-ring

Item	Order	Description
14	528597	Shaft extension, 17mm
15	528598	Shaft, 42mm

Taps

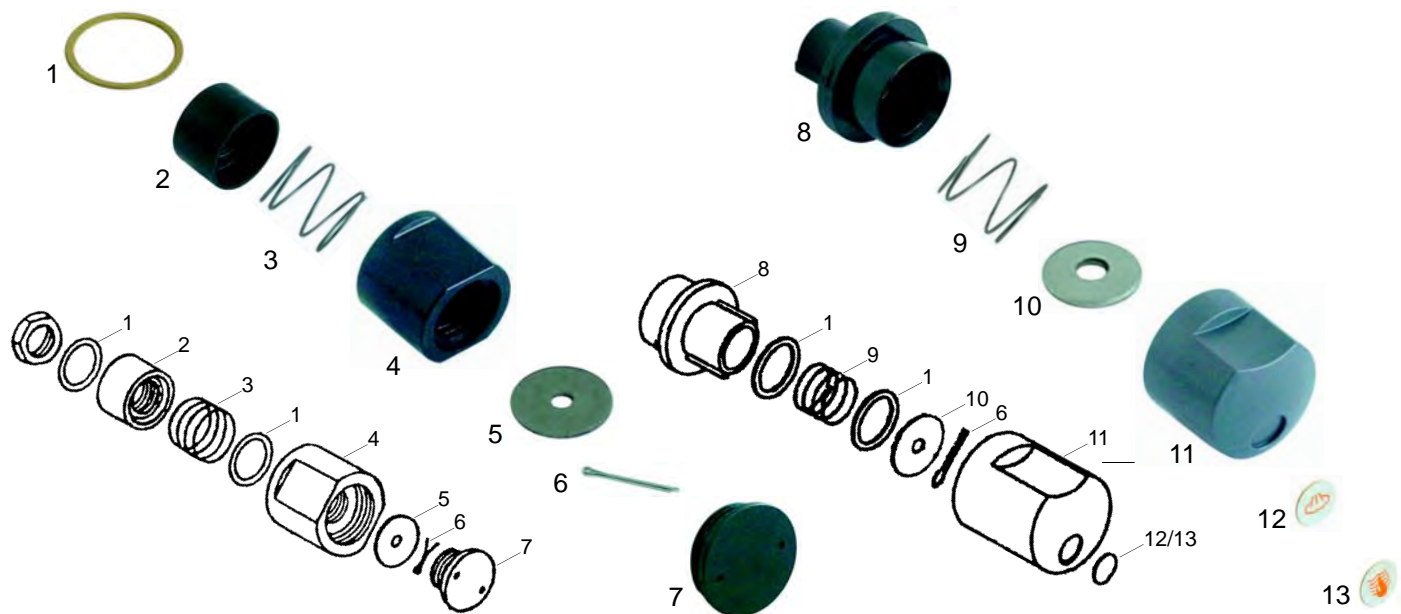
Suitable for Mairali



Item	Order	Description
1	529520	Steam/Water tap/cpl.
2	528427	Steam/Water tap/cpl.
3	528520	Cu-gasket
4	528648	Gasket (viton)

Item	Order	Description
5	528484	Spring
6	528649	O-ring (viton)
7	528643	Screw
8	528644	Washer

Item	Order	Description
9	528645	Spring
10	528646	Washer
11	528647	O-ring



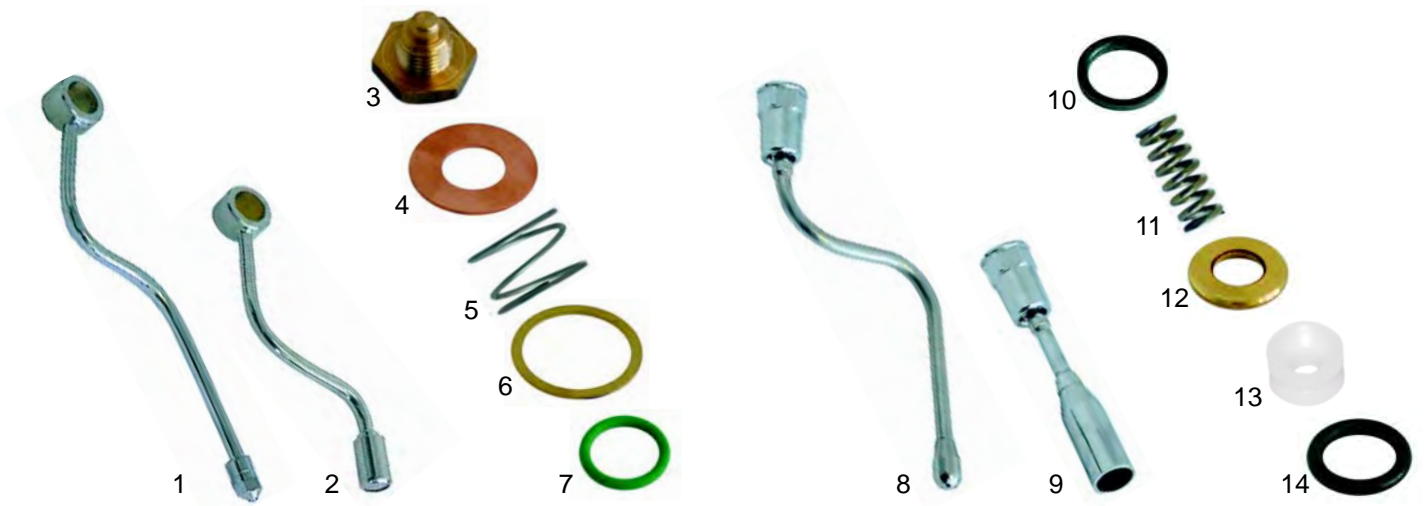
Item	Order	Description
1	528759	Washer
2	528650	Bush
3	528780	Spring
4	111104	Knob
5	528781	Washer

Item	Order	Description
6	528762	Pin
7	111110	Cap
8	528760	Bush
9	528758	Spring

Item	Order	Description
10	528761	Washer
11	111122	Knob
12	111113	Cap/steam
13	111114	Cap/water



## Pipes



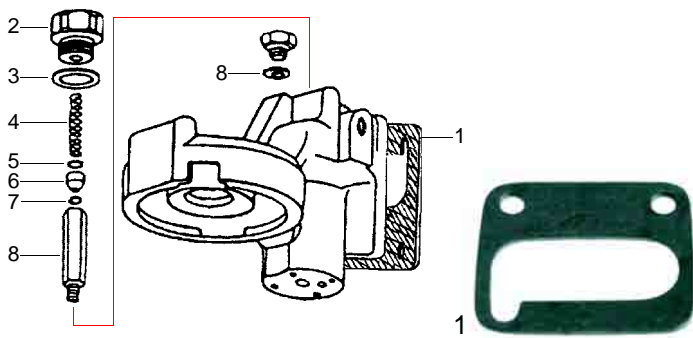
Item	Order	Description
1	529521	Steam pipe
2	529522	Water pipe
3	528643	Banjo stem single
4	528644	Washer
5	528645	Spring

Item	Order	Description
6	528646	Washer
7	528647	O-ring (viton)
8	529587	Steam pipe
8	529588	Steam pipe (stainless steel)
9	529589	Water pipe

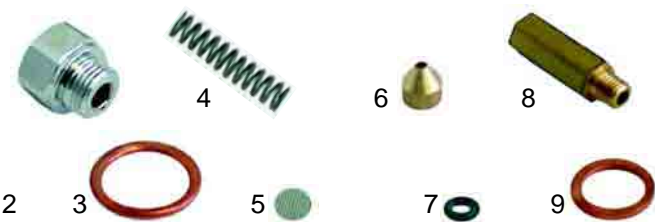
Item	Order	Description
10	528401	Gasket
11	528184	Spring
12	528653	Washer
13	528654	Bush
14	528655	O-ring

Suitable for Mairali

## Gruppe/Group



Item	Order	Description
1	528763	Group gasket



Item	Order	Description
2	528659	Ending cap
3	528520	Gasket
4	528668	Spring
5	528669	Filter
6	528670	Jet
7	528765	O-ring (viton)
8	528766	Lengthening, M6
8	528767	Lengthening, M8
9	528662	Cu-Gasket

## Shower



Item	Order	Description
1	529081	Dispersion
2	529080	Shower

## Filter holder gaskets



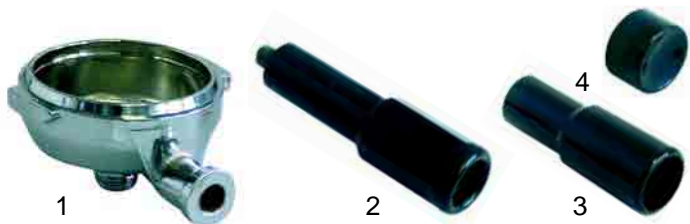
Item	Order	Description
1	528033	Shim gasket, 71 x 68mm
2	528030	Filter holder gasket, 73 x 57 x 8mm
2	528031	Filter holder gasket, 73 x 57 x 8,5mm
2	528032	Filter holder gasket, 73 x 57 x 9mm
3	529079	Filter holder spring

## Filter



Item	Order	Description
1	529012	Filter, 1 cup (6g)
1	529011	Filter, 1 cup (7g)
2	529014	Filter, 2 cups (12g)
2	529013	Filter, 2 cups (14g)
3	529023	Blank filter

## Filter holder



Item	Order	Description
1	529041	Filter holder, M12
2	529121	Filter holder handle
3	529148	Filter holder handle
4	529147	Cap



Item	Order	Description
1	529150	Filter holder
2	529112	Filter holder handle
3	529123	Screw

## Spouts



Item	Order	Description
1	529001	Spout 3/8", one way long
2	529003	Spout 3/8", one way curved
3	529007	Spout 3/8", two way short