

# *Spare parts suitable for:* **FAEMA**

*Spare parts suitable for coffee machines*

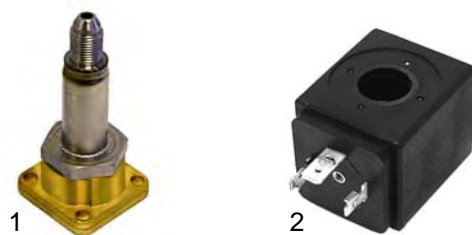


## Solenoid valves

Scem/Parker



| Item | Order  | Description                            |
|------|--------|--|
| 1    | 370057 | cpl., 3 ways, 230V AC                  |
| 1    | 370058 | cpl., 3 ways, 24V DC                   |
| 2    | 370059 | cpl., (Cappuccinatore) 3 ways, 230V AC |
| 3    | 370206 | cpl., 1/8", 2 ways, 230V AC            |
| 3    | 370067 | cpl., 1/4", 2 ways, 230V AC            |



| Item | Order  | Description            |
|------|--------|------------------------|
| 1    | 370062 | Solenoid square base   |
| 2    | 371029 | Magnetic coil, 230V AC |
| 2    | 371030 | Magnetic coil, 24V DC  |

Lucifer



| Item | Order  | Description                          |
|------|--------|--------------------------------------|
| 1    | 370053 | Solenoid valve/cpl., 3 ways, 230V AC |
| 2    | 370061 | Solenoid square base                 |
| 3    | 371031 | Magnetic coil, 230V AC               |

## Solenoid valve accessories

Scem/Parker, Lucifer



| Item | Order  | Description      |
|------|--------|------------------|
| 1    | 371090 | Plug/ big        |
| 2    | 371095 | O-ring (viton)   |
| 3    | 371100 | O-ring (silicon) |

## Solenoid valves

Sirai



M&M



| Item | Order  | Description                                |
|------|--------|--|
| 1    | 370168 | Solenoid valve/cpl., 1/8", 2 ways, 230V AC |
| 2    | 371071 | Magnetic coil, 230V AC                     |
| 3    | 370068 | Solenoid/cpl., 2 ways, 230V AC             |
| 4    | 371022 | Magnetic coil, 230V AC                     |

## Solenoid valve accessories

Sirai



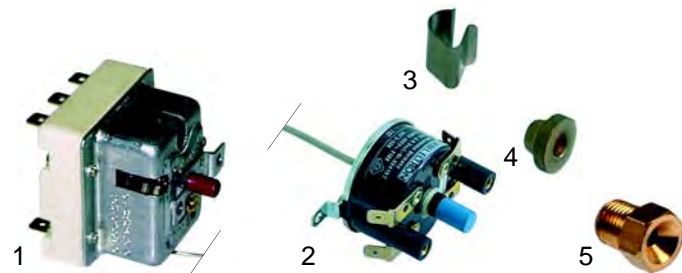
| Item | Order  | Description    |
|------|--------|----------------|
| 1    | 371091 | Plug/small     |
| 2    | 371095 | O-ring/viton   |
| 3    | 371100 | O-ring/silicon |

## Pressure switches



| Item | Order  | Description             | Model | OEM         |
|------|--------|-------------------------|-------|-------------|
| 1    | 541021 | Pressure switch, 3-pole |       | 2231-116597 |
| 2    | 520139 | Membrane-kit            |       |             |

## Thermostats



| Item | Order  | Description                | OEM         |
|------|--------|----------------------------|-------------|
| 1    | 390166 | Safety thermostat, 3 poles | 3231-133006 |
| 2    | 390154 | Stiebel-safety thermostat  |             |
| 3    | 550006 | Clamp spring               |             |
| 4    | 550350 | Special-cone (Stiebel)     |             |
| 5    | 550351 | Pipe upper nut (Stiebel)   |             |



| Item | Order  | Description                           |
|------|--------|---------------------------------------|
| 1    | 390152 | Contact thermostat, M4, 107°C, coffee |
| 1    | 390153 | Contact thermostat, M4, 135°C, steam  |
| 2    | 390370 | Safety thermostat, M4, 145°C          |

## Temperatur sensors, triacs

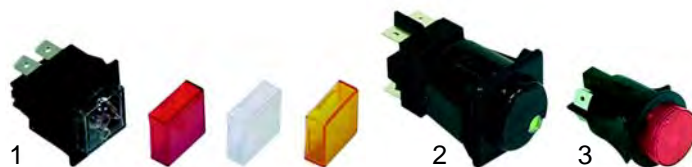


| Item | Order  | Description        | OEM         |
|------|--------|--------------------|-------------|
| 1    | 400082 | NTC-sensor         | 3761-117825 |
| 2    | 528487 | Gasket             | 4701-116687 |
| 3    | 529360 | Cu-gasket, 1/2"    | 4701-024552 |
| 4    | 400083 | Temperature sensor | 3761-132007 |
| 5    | 400032 | Triac              | 4761-117735 |

## Switches



| Item | Order  | Description | Model   | OEM         |
|------|--------|-------------|---|-------------|
| 1    | 345145 | Main switch | P4 - P6   |             |
| 2    | 345147 | Main switch | No-Stop, Star, Tronic, Special, Express, E91, Due | 2761-130012 |
| 3    | 345150 | Main switch | Compact   | 3761-119055 |
| 4    | 110205 | Knob        |   |             |



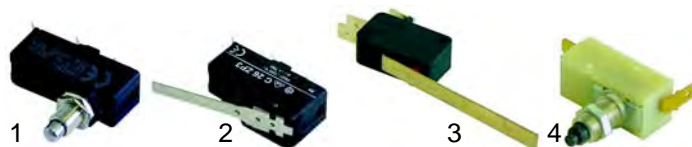
| Item | Order  | Description           | Model   | OEM         |
|------|--------|-----------------------|---------|-------------|
| 1    | 345033 | Group switch, 1 serie | Star    |             |
| 2    | 345142 | Group switch, 2 serie | Special | 3761-130381 |
| 3    | 345160 | Switch, 2-poles       |         |             |

## Switches



| Item | Order  | Description         | Model      | OEM         |
|------|--------|---------------------|------------|-------------|
| 1    | 345141 | Switch, 2 poles     | Dus, E91-S | 3341-132683 |
| 2    | 345130 | Push button, 1 pole | Dus, E91-S |             |
| 3    | 400308 | Push button, E91/S  | Dus, E91-S | 4531-132425 |
| 4    | 346009 | Cup warmer switch   | E91        |             |

## Micro switches



| Item | Order  | Description  | Model       | OEM |
|------|--------|--------------|-------------|-----|
| 1    | 345156 | Micro switch | E61         |     |
| 2    | 345269 | Micro switch | P4/P6       |     |
| 3    | 346006 | Micro switch | No-Stop     |     |
| 4    | 346007 | Micro switch | Star-Tronic |     |

## Lamps



| Item | Order  | Description            |
|------|--------|------------------------|
| 1    | 359043 | Lamp/red, 12mm, 230V   |
| 2    | 359138 | Lamp/red, 10mm 230V    |
| 3    | 359140 | Lamp/yellow, 10mm 230V |
| 4    | 359400 | Lamp/green, 8mm, 230V  |
| 5    | 359401 | Lamp/red, 8mm, 230V    |

## Level controllers



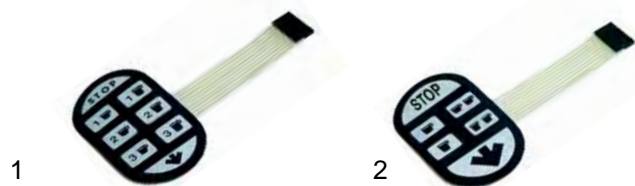
| Item | Order  | Description        | Model | OEM         |
|------|--------|--------------------|-------|-------------|
| 1    | 400010 | RL70/1E/2C/8       |       | 3341-117373 |
| 2    | 380137 | Base, 8 poles      |       |             |
| 3    | 400020 | Level probe, 150mm |       |             |

## F Flowmeters

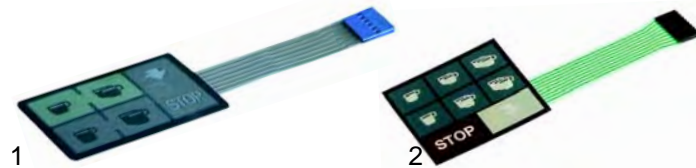


| Item | Order  | Description                    | OEM         |
|------|--------|--------------------------------|-------------|
| 1    | 400004 | Flowmeter (Gicar), 1/4"        |             |
| 2    | 400005 | Flowmeter, with turn-off, 1/4" | 2251-131855 |
| 3    | 400256 | Plug                           |             |
| 4    | 400257 | Flowmeter turbine (Gicar)      |             |
| 4    | 400259 | Flowmeter turbine (Digmesa)    | 4831-091782 |
| 5    | 400258 | Case gasket                    | 4701-030130 |

## Key push buttons



| Item | Order  | Description     | Model   | OEM         |
|------|--------|-----------------|---------|-------------|
| 1    | 400080 | Key push button | Express |             |
| 2    | 400081 | Key push button | Compact | 3761-131514 |



| Item | Order  | Description     | Model   | OEM                                       |
|------|--------|-----------------|---------|---|
| 1    | 400309 | Key push button | DUE A   | 3301-132842<br>3301-132827<br>3301-134930 |
| 2    | 400672 | Key push button | Express | 3301-132463<br>3529-091848                |

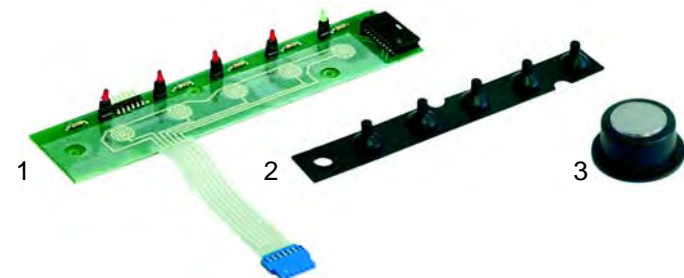


| Item | Order  | Description     | Model             | OEM         |
|------|--------|-----------------|-------------------|-------------|
| 1    | 400674 | Key push button | E 97 A<br>Express | 3301-134529 |
| 2    | 400675 | Key push button | E 97S<br>Special  | 3301-134530 |

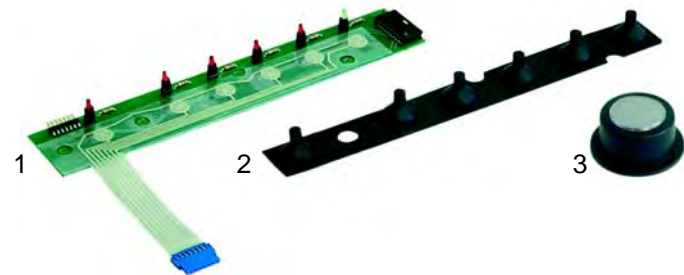
## Key push buttons



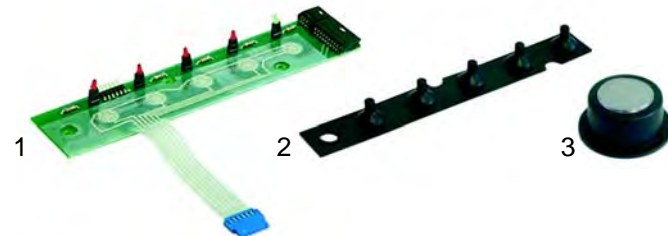
| Item | Order  | Description           | Model   | OEM         |
|------|--------|-----------------------|---------|-------------|
| 1    | 400574 | Key push button/water | E 91 NA | 3301-134295 |
| 2    | 400575 | Cover                 | E 91 NA | 4831-134292 |
| 3    | 400307 | Push button/grey      | E 91 NA | 4533-133828 |



| Item | Order  | Description          | Model   | OEM         |
|------|--------|----------------------|---------|-------------|
| 1    | 400585 | Key push button/left | E 91 NA | 3301-135184 |
| 2    | 400304 | Cover                | E 91 NA | 4831-132302 |
| 3    | 400582 | Push button/grey     | E 91 NA | 3533-133931 |

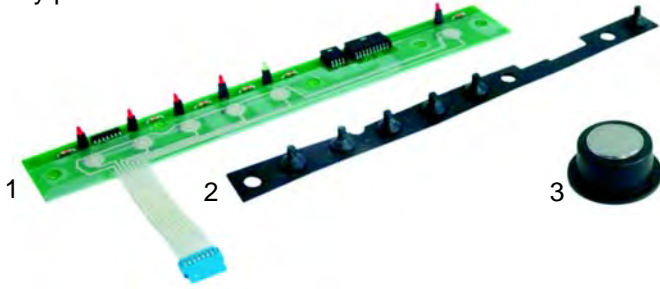


| Item | Order  | Description          | Model | OEM         |
|------|--------|----------------------|-------|-------------|
| 1    | 400300 | Key push button/left | E91 A | 3301-132570 |
| 2    | 400303 | Cover/left           | E91 A | 4831-132300 |
| 3    | 400582 | Push button/grey     | E91 A | 3533-133931 |



| Item | Order  | Description            | Model     | OEM         |
|------|--------|------------------------|-----------|-------------|
| 1    | 400301 | Key push button/middle | E91 A/NA  | 3301-131572 |
| 2    | 400304 | Cover                  | E91 A/NA  | 4831-132302 |
| 3    | 400582 | Push button/grey       | E 91 A/NA | 3533-133931 |

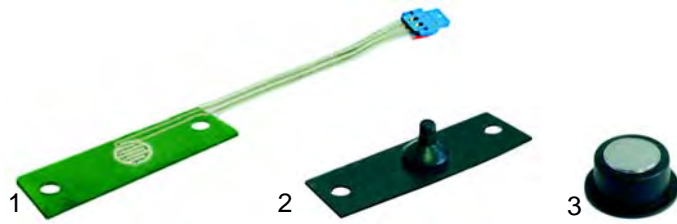
## Key push buttons



| Item | Order  | Description           | Model     | OEM         |
|------|--------|-----------------------|-----------|-------------|
| 1    | 400302 | Key push button/right | E 91 A/NA | 3301-132571 |
| 2    | 400305 | Cover/right           | E 91 A/NA | 4831-132303 |
| 3    | 400582 | Push button/grey      | E 91 A/NA | 3533-133931 |



| Item | Order  | Description                   | Model                      | OEM   |
|------|--------|-------------------------------|----------------------------|---|
| 1    | 400685 | Platine<br>Electronic control | E 91 NA, E91 A,<br>E91 DA, | 3341-135069<br>3341-134037<br>3341-134038<br>3761-132135<br>3761-132142<br>3301-132720<br>3301-132721 |



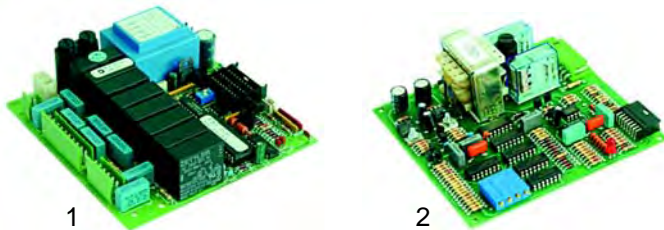
| Item | Order  | Description      | Model   | OEM         |
|------|--------|------------------|---------|-------------|
| 1    | 400580 | Key push button  | E 91 NS | 3301-133922 |
| 2    | 400581 | Cover            | E 91 NS | 4831-134255 |
| 3    | 400582 | Push button/grey | E91 NS  | 3533-133931 |

## Pumps



| Item | Order  | Description | Model                           | OEM         |
|------|--------|-------------|---------------------------------|-------------|
| 1    | 500076 | Pump        | Compact,<br>Spezial,<br>Express | 2441-116600 |
| 2    | 500077 | Pump        | Tronic,<br>E91,<br>Due          | 2441-133416 |
| 3    | 500062 | Pump, 150W  | universal                       |             |

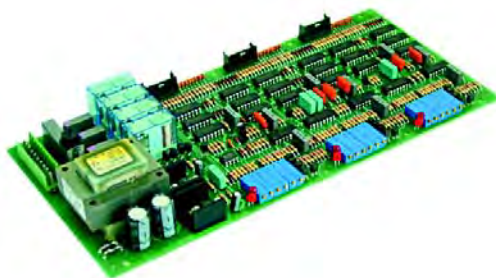
## Electronic controls



| Item | Order  | Description        | Model  | OEM                        |
|------|--------|--------------------|--|----------------------------|
| 1    | 400680 | Electronic control | DUE A/S<br>E 97 A/S<br>E 98 Diplomat A/S<br>E 91 S | 3341-132868<br>3341-135683 |
| 2    | 400684 | Electronic control | Compact A  | 3761-119516                |



| Item | Order  | Description                |
|------|--------|----------------------------|
| 1    | 500078 | Pump, special type, 200l/h |
| 2    | 500065 | Pump, special type, 200l/h |
| 3    | 500066 | Coupling set               |



| Item | Order  | Description               | Model   | OEM         |
|------|--------|---------------------------|---------|-------------|
| 1    | 400681 | Electronic control, 1 gr. | Express | 3761-130706 |
| 2    | 400682 | Electronic control, 2 gr. | Express | 3761-130707 |
| 3    | 400683 | Electronic control, 3 gr. | Express | 3761-130708 |



| Item | Order  | Description                   |
|------|--------|-------------------------------|
| 1    | 500173 | Pump, (Ulka), EP5, 48 W, 230V |
| 2    | 500124 | Pump, (Ulka), EX5, 48 W, 230V |
| 3    | 365015 | Capacitor, 10 mF              |
| 3    | 365014 | Capacitor, 12 mF              |

## Elements



| Item | Order  | Description                 |
|------|--------|-----------------------------|
| 1    | 417002 | 1 group, 1500W, 230V, (E61) |
| 2    | 417003 | 1 group, 1800W, 230V, (E61) |
| 3    | 417001 | 2 groups, 2600W, 230V       |

With connection for safety thermostat



| Item | Order  | Description               |
|------|--------|---------------------------|
| 1    | 417004 | 1 + 2 groups, 2400W, 230V |
| 2    | 417103 | 2 group, 2600W, 230V      |
| 2    | 417104 | 2 groups, 3700W, 230V     |
| 3    | 417105 | 3 groups, 3700W, 230V     |
| 3    | 417106 | 3 groups, 5000W, 230V     |

## Elements

With immersion socket



| Item | Order  | Description           |
|------|--------|-----------------------|
| 1    | 417107 | 1 group, 2500W, 230V  |
| 2    | 417001 | 2 group, 2600W, 230V  |
| 2    | 417108 | 2 groups, 3500W, 230V |
| 3    | 417109 | 3 groups, 3700W, 230V |
| 3    | 417110 | 3 groups, 5000W, 230V |

## 3 circuits with immersion socket



| Item | Order  | Description                  |
|------|--------|------------------------------|
| 1    | 417111 | 2 groups, 3750W/230/400V     |
| 2    | 417112 | 2 + 3 groups, 4500W/230/400V |
| 3    | 528488 | Gasket (klingerit)           |
| 4    | 528002 | Gasket (teflon)              |



| Item | Order  | Description                       |
|------|--------|-----------------------------------|
| 1    | 417083 | 1 group, 1500W, 230V, (Compact A) |
| 2    | 528022 | Gasket (teflon)                   |



| Item | Order  | Description           |
|------|--------|-----------------------|
| 1    | 417113 | 1000W, 230V, (Family) |
| 2    | 417114 | 800W, 230V, (Amica)   |
| 3    | 417115 | 850W, 230V, (Ciao)    |



| Item | Order  | Description    |
|------|--------|----------------|
| 1    | 528232 | Boiler gasket  |
| 2    | 528489 | Element gasket |

## Boiler gaskets



| Item | Order  | Description                              |
|------|--------|--|
| 1    | 528100 | Gasket/teflon (No-Stop, Prestige)        |
| 2    | 528103 | Gasket/klingerit, 16 holes (E61, Ariete) |
| 2    | 528108 | Gasket/klingerit, 12 holes (E61, Ariete) |
| 3    | 528104 | Gasket/teflon, 16 holes (E61, Ariete)    |
| 3    | 528107 | Gasket/teflon, 12 holes (E61, Ariete)    |

## Boiler flange



| Item | Order  | Description                    |
|------|--------|--------------------------------|
| 1    | 528109 | Flange/12 holes, (E61, Ariete) |
| 2    | 528111 | Flange/12 holes, (E61, Ariete) |
| 3    | 528106 | Ring/16 holes, (E61, Ariete)   |
| 3    | 528112 | Ring/12 holes, (E61, Ariete)   |

## Manometer



| Item | Order  | Description                      |
|------|--------|----------------------------------|
| 1    | 541200 | Manometer, 0 - 3 bar (E61)       |
| 2    | 541201 | Manometer, 0 - 16 bar (E61)      |
| 3    | 541202 | Manometer, doublescale (E64/E66) |



| Item | Order  | Description   |
|------|--------|---|
| 1    | 541203 | Manometer, doublescale (No-Stop, P4, P6, Due, Special, Express, Star) |
| 2    | 541207 | Manometer, 0 - 15 bar (Supertronic)                                   |



| Item | Order  | Description                  |
|------|--------|------------------------------|
| 1    | 541205 | Manometer, 0 - 2,5 bar (E91) |
| 2    | 541206 | Manometer, 0 - 16 bar (E91)  |

## Valves

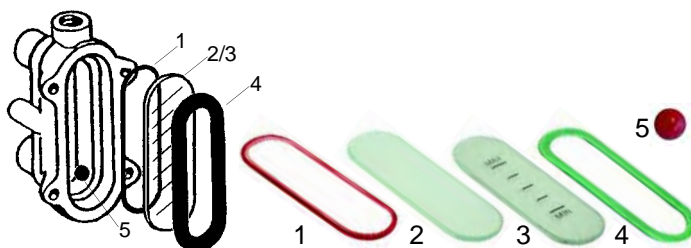


| Item | Order  | Description                         |
|------|--------|-------------------------------------|
| 1    | 529312 | Safety valve, 1,8 bar, 3/8"         |
| 2    | 529332 | Safety valve/sealed, 1,8 bar, 3/8"  |
| 3    | 529303 | Empty valve (stainless steel), 1/4" |
| 4    | 529304 | Empty valve (stainless steel), 1/4" |
| 5    | 529349 | Cu-gasket, 3/8"                     |
| 6    | 529361 | Cu-gasket, 1/4"                     |



| Item | Order  | Description                   |
|------|--------|-------------------------------|
| 1    | 529301 | Non-return valve, 3/8" (pump) |
| 2    | 529329 | Expansion valve, 3/8"         |
| 3    | 528490 | Non-return valve (E61)        |
| 4    | 529300 | Expansion valve (E61)         |

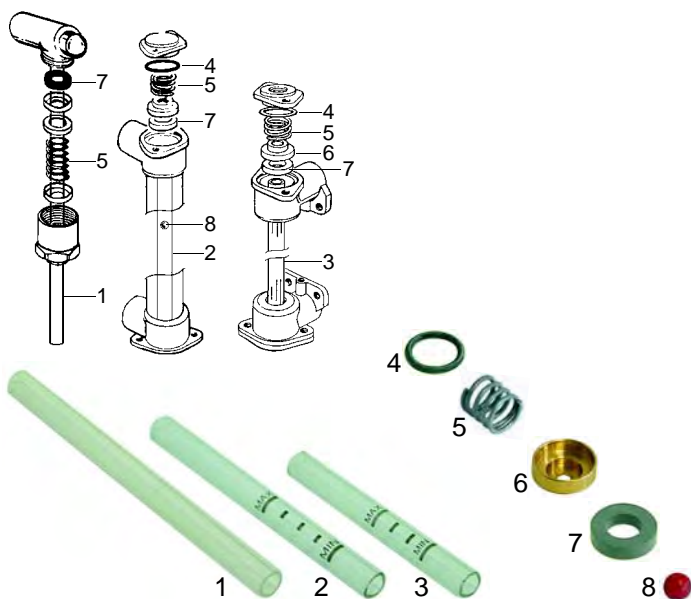
## Level glass



| Item | Order  | Description                   |
|------|--------|-------------------------------|
| 1    | 529362 | O-ring                        |
| 2    | 529366 | Glass (E91, E97, Due, Tronic) |
| 3    | 529365 | Glass (Compact)               |
| 4    | 529363 | Gasket                        |
| 5    | 529355 | Plastic ball                  |

F

## Level glass



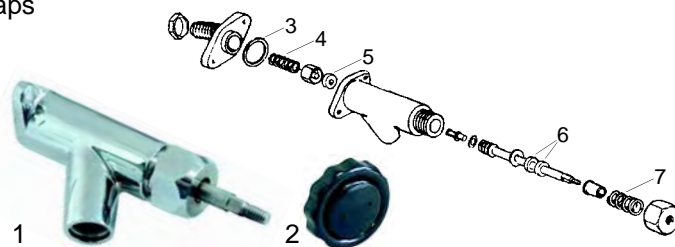
| Item | Order  | Description                                 |
|------|--------|---|
| 1    | 529352 | Level glass, 12 x 175 mm (E61)              |
| 2    | 529351 | Level glass, 12 x 135 mm (E61 - E64)        |
| 2    | 529350 | Level glass, 12 x 130 mm (P4 - P6, No-Stop) |
| 3    | 529353 | Level glass, 12 x 107 mm, (Startronic)      |
| 4    | 529357 | Gasket                                      |
| 5    | 529356 | Spring                                      |
| 6    | 529358 | Bush  |
| 7    | 529354 | Gasket                                      |
| 8    | 529355 | Plastic ball                                |

## Drain sump



| Item | Order  | Description      |
|------|--------|------------------|
| 1    | 528609 | Drain sump (E61) |

## Taps

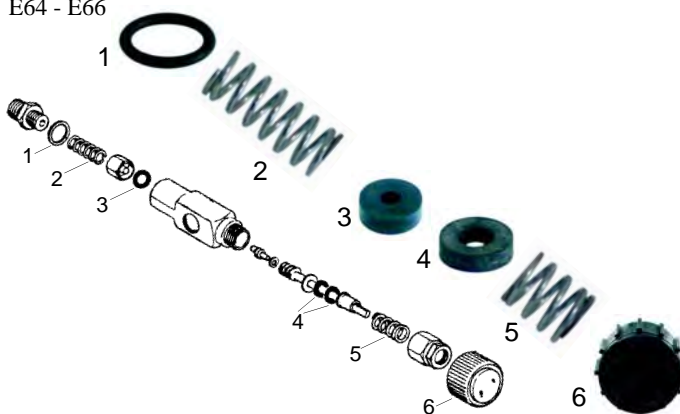


| Item | Order  | Description                 | Model |
|------|--------|-----------------------------|-------|
| 1    | 528491 | Tap/complete, (steam/water) | E 61  |
| 2    | 111028 | Knob                        |       |

|   |        |        |
|---|--------|--------|
| 3 | 528492 | Gasket |
| 4 | 528493 | Spring |
| 5 | 528494 | Gasket |
| 6 | 528495 | Gasket |
| 7 | 528257 | Spring |

## E64 - E66



| Item | Order  | Description |
|------|--------|-------------|
| 1    | 528496 | Gasket      |
| 2    | 528497 | Spring      |
| 3    | 528494 | Gasket      |
| 4    | 528495 | Gasket      |
| 5    | 528498 | Spring      |
| 6    | 111029 | Knob        |

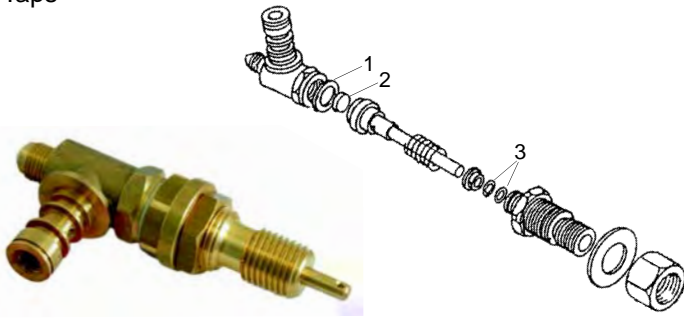
## Pipes



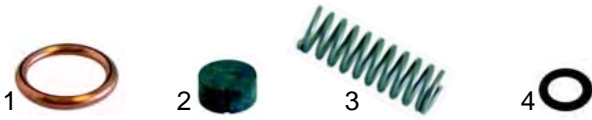
| Item | Order  | Description             |
|------|--------|-------------------------|
| 1    | 529557 | Steam pipe, 25 cm (E61) |
| 1    | 529558 | Steam pipe, 35 cm (E61) |
| 2    | 529559 | Water pipe, 25 cm (E61) |
| 3    | 529527 | Perlator                |
| 4    | 529513 | Steam jet/milled        |
| 5    | 529573 | Steam jet/cylindric     |



## Taps

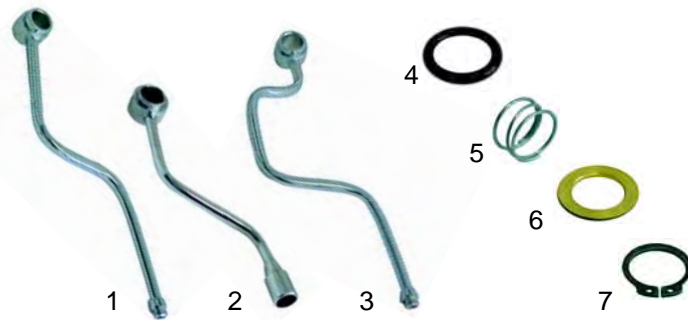


| Item | Order  | Description                         | Model       |
|------|--------|-------------------------------------|-------------|
| 1    | 529500 | Steam/Water tap/cpl., 1 mm gradient | 2221-091783 |



| Item | Order  | Description |
|------|--------|-------------|
| 1    | 528501 | Cu-gasket   |
| 2    | 528502 | Gasket      |
| 3    | 528503 | Spring      |
| 4    | 528485 | Gasket      |

## Delivery pipes



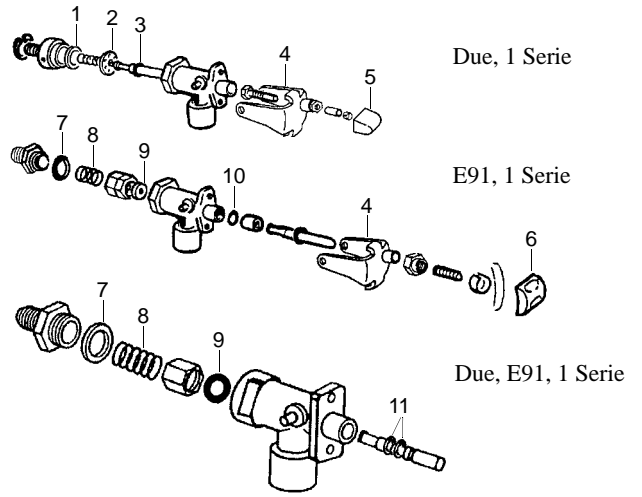
| Item | Order  | Description  |
|------|--------|--|
| 1    | 529506 | Steam pipe (No-Stop, Compact, Prestige, Express, Special)                  |
| 1    | 529549 | Steam pipe /stainless steel (No-Stop, Compact, Prestige, Express, Special) |
| 2    | 529568 | Water pipe (No-Stop, Prestige, Express)                                    |
| 3    | 529505 | Steam pipe/right (Star, Tronic)  |
| 3    | 529504 | Steam pipe/left (Star, Tronic)   |
| 4    | 528504 | O-ring   |
| 5    | 529701 | Spring   |
| 6    | 529703 | Washer   |
| 7    | 529702 | Circlip ring   |

## Taps



E91, Due

| Item | Order  | Description   | Model    | OEM         |
|------|--------|---------------|----------|-------------|
| 1    | 529502 | Tap/cpl., new | Due, E91 | 2221-134646 |



## Taps



| Item | Order  | Description    |
|------|--------|----------------|
| 1    | 528505 | O-ring (viton) |
| 2    | 528506 | Membrane       |
| 3    | 528507 | O-ring         |
| 4    | 111030 | Lever          |
| 5    | 111031 | Button (Due)   |
| 6    | 111032 | Button (E91)   |
| 7    | 528508 | Cu-gasket      |
| 8    | 528509 | Spring         |
| 9    | 528494 | Gasket         |
| 10   | 528396 | O-ring         |
| 11   | 528469 | O-ring         |

## Delivery pipes



| Item | Order  | Description                  |
|------|--------|------------------------------|
| 1    | 529511 | Steam pipe                   |
| 1    | 529569 | Steam pipe (stainless steel) |
| 2    | 529570 | Water pipe                   |
| 3    | 528510 | Spring                       |
| 4    | 528511 | Washer                       |
| 5    | 528512 | O-ring                       |
| 6    | 528513 | Bush (teflon)                |
| 7    | 528514 | Gasket (teflon)              |

## Taps



| Item | Order  | Description    | Model | OEM         |
|------|--------|----------------|-------|-------------|
| 1    | 529503 | Steam tap/cpl. | E 98  | 2221-135023 |
| 2    | 111033 | Knob           |       |             |



| Item | Order  | Description                      |
|------|--------|----------------------------------|
| 1    | 111001 | Knob (Compact, Express, Spezial) |
| 2    | 111002 | Knob (Star, Tronic)              |
| 3    | 111034 | Knob/Water (E97)                 |
| 4    | 111035 | Knob/Steam (E97)                 |



| Item | Order  | Description  |
|------|--------|--------------|
| 3    | 528515 | O-ring       |
| 4    | 529546 | Washer       |
| 5    | 528517 | Washer       |
| 6    | 528518 | Circlip ring |

## Pipes



| Item | Order  | Description                  |
|------|--------|------------------------------|
| 1    | 529512 | Steam pipe                   |
| 1    | 529575 | Steam pipe (stainless steel) |
| 2    | 529707 | Union nut                    |
| 3    | 528205 | Gasket                       |
| 4    | 529708 | Spring                       |
| 5    | 528204 | Bush                         |
| 6    | 529545 | O-ring                       |

## Taps

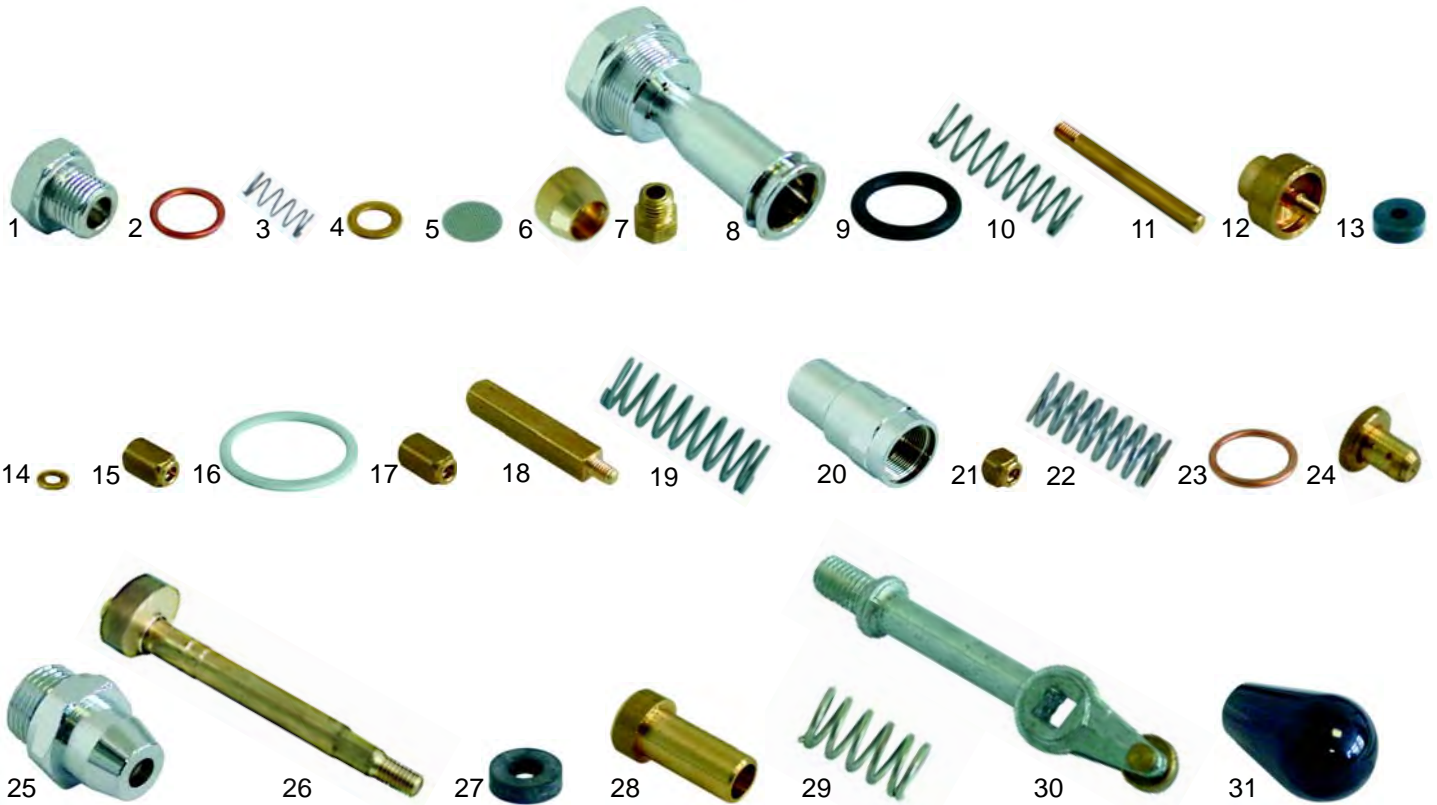
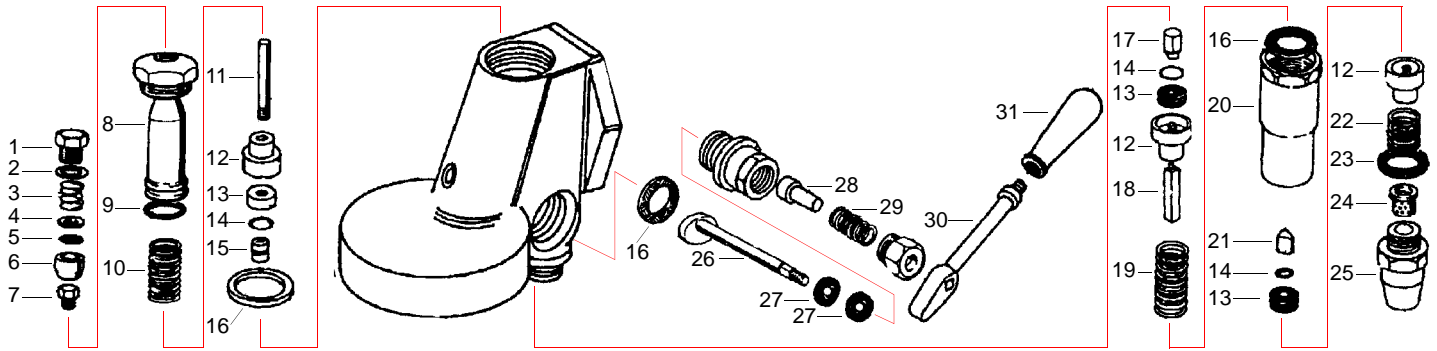


| Item | Order  | Description                   |
|------|--------|-------------------------------|
| 1    | 111004 | Knob (Prestige)               |
| 2    | 111006 | Knob (No-Stop), 2 mm gradient |
| 2    | 111007 | Knob (No-Stop), 1 mm gradient |
| 3    | 111008 | Symbol/water                  |
| 4    | 111009 | Symbol/steam                  |

## Group E61

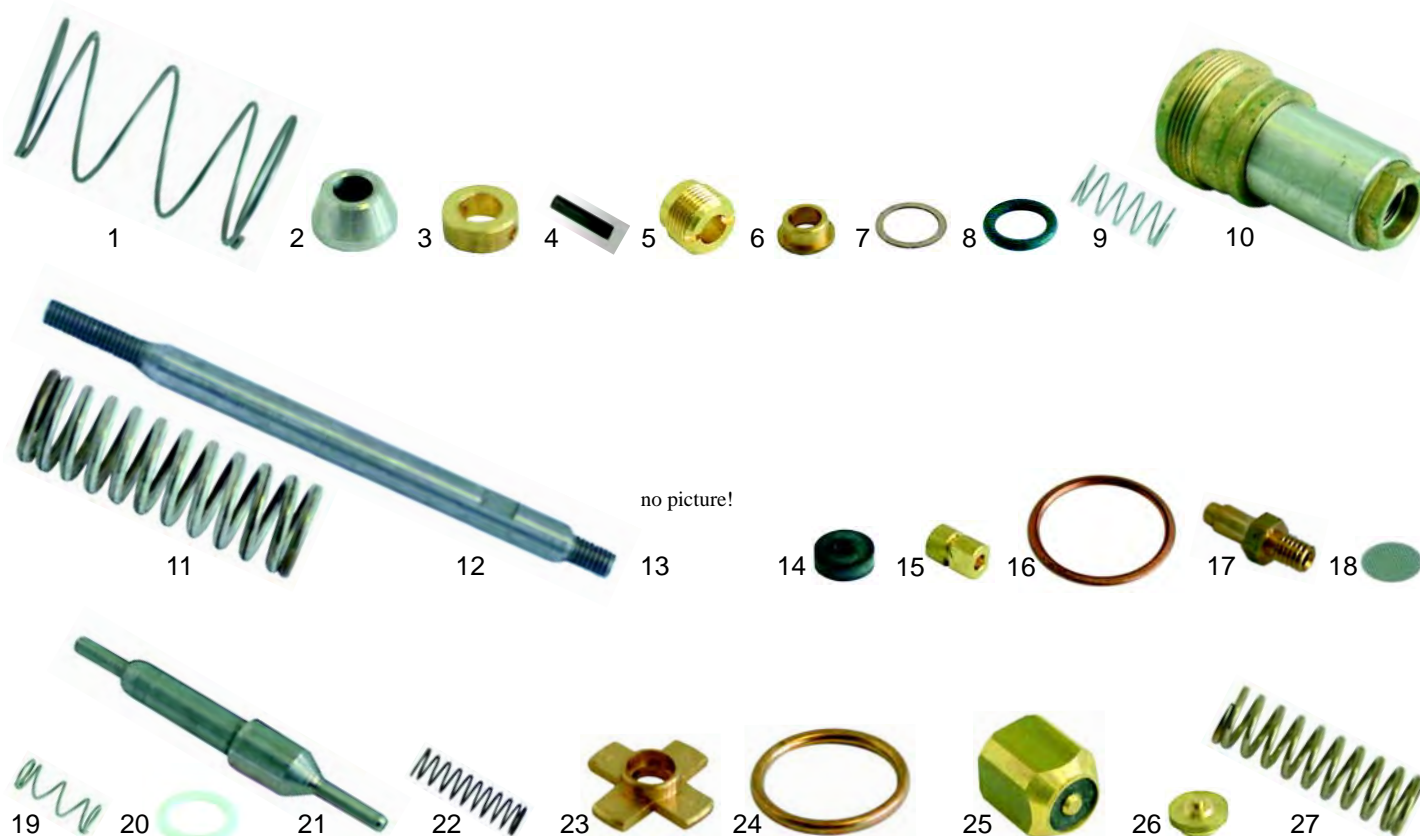
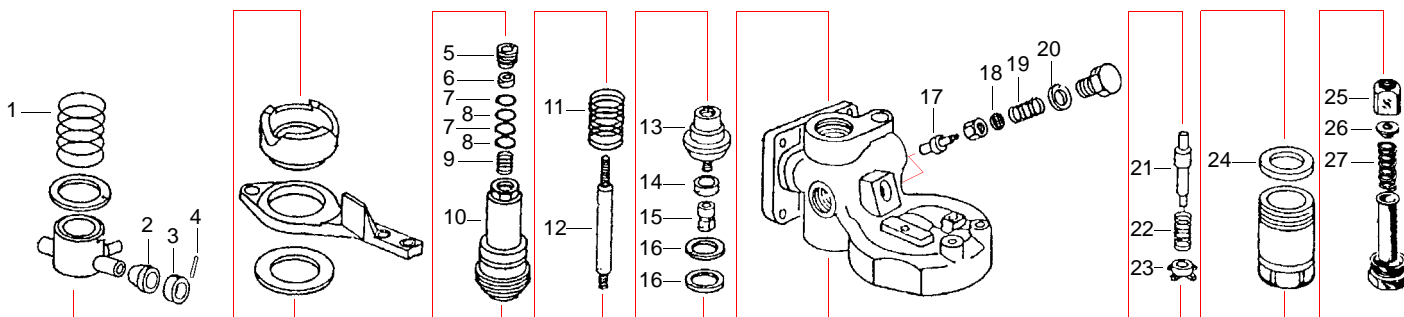
F

Suitable for Faema



| Item | Order  | Description | Item | Order  | Description          | Item | Order  | Description      |
|------|--------|-------------|------|--------|----------------------|------|--------|------------------|
| 1    | 528519 | End cap     | 12   | 528528 | Bush                 | 22   | 528475 | Spring           |
| 2    | 528520 | Cu-gasket   | 13   | 528494 | Gasket, 13 x 4 x 4mm | 23   | 528508 | Cu-gasket        |
| 3    | 528521 | Spring      | 14   | 528529 | Washer               | 24   | 528537 | Perlator         |
| 4    | 528522 | Washer      | 15   | 528530 | Hat nut, 11 mm       | 25   | 528538 | Drain end part   |
| 5    | 528326 | Filter      | 16   | 528524 | Gasket (teflon)      | 26   | 528539 | Shaft, eccentric |
| 6    | 528321 | Bush        | 17   | 528531 | Hat nut, 12mm        | 27   | 528495 | Gasket           |
| 7    | 528486 | Jet         | 18   | 528532 | Srew/long, infusion  | 28   | 528541 | Bush             |
| 8    | 528523 | Trumpet     | 19   | 528533 | Spring               | 29   | 528542 | Spring           |
| 9    | 528525 | O-ring      | 20   | 528534 | Connector            | 30   | 528543 | Lever            |
| 10   | 528526 | Spring      | 21   | 528535 | Hat nut              | 31   | 111056 | Handle           |
| 11   | 528527 | Shaft       |      |        |                      |      |        |                  |

Group E64, E66, P4, P6



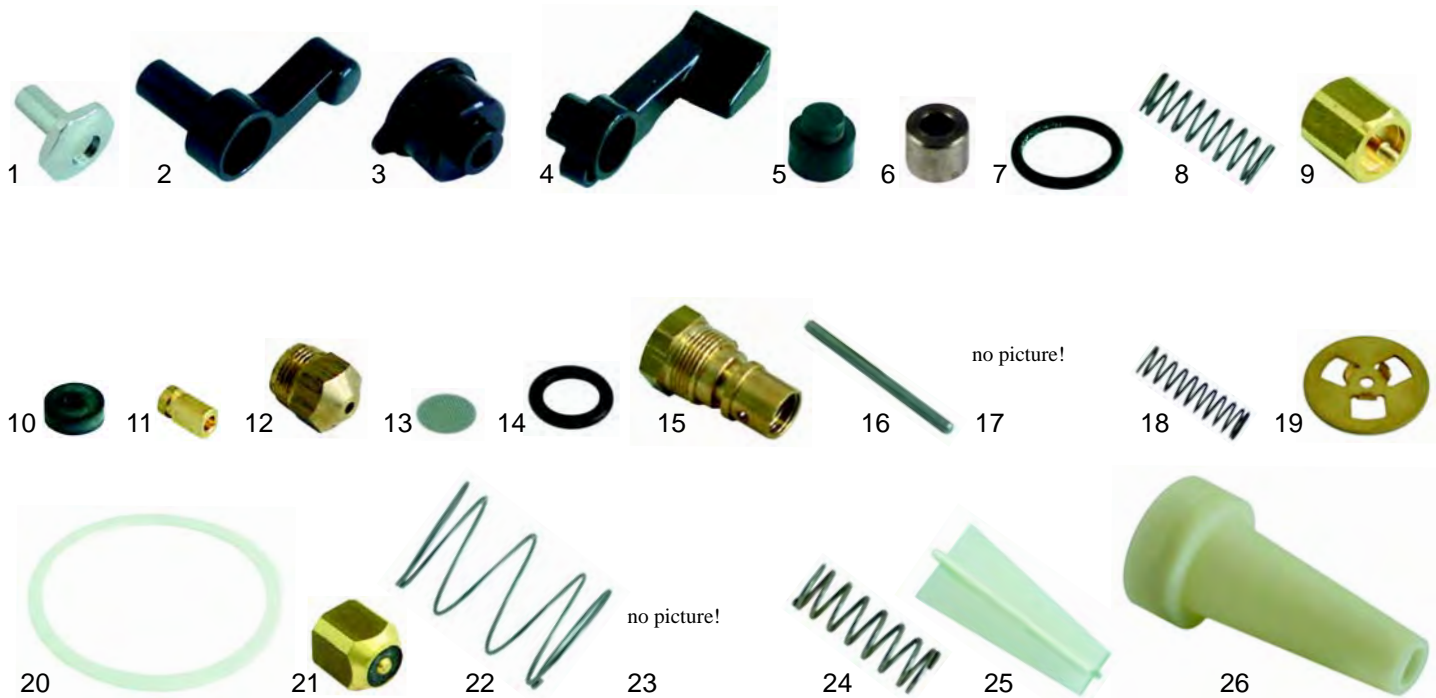
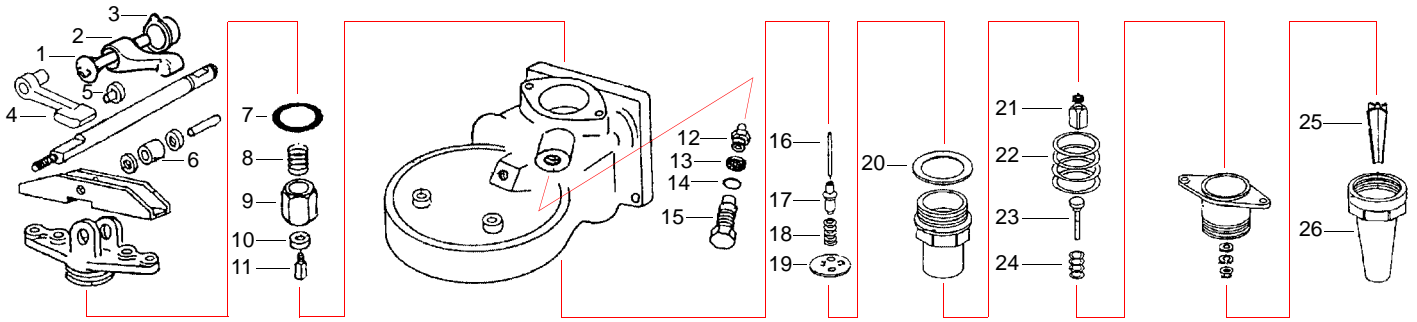
no picture!

| Item | Order  | Description                    | Item | Order  | Description          | Item | Order  | Description          |
|------|--------|--------------------------------|------|--------|----------------------|------|--------|----------------------|
| 1    | 528544 | Spring                         | 10   | 528554 | Connector            | 19   | 528563 | Spring               |
| 2    | 528545 | Bush                           | 11   | 528555 | Spring               | 20   | 528564 | Gasket (teflon)      |
| 3    | 528546 | Adjust ring                    | 12   | 528556 | Shaft                | 21   | 528565 | Shaft                |
| 4    | 528547 | Pivot                          | 13   | 528557 | Bush                 | 22   | 528566 | Spring               |
| 5    | 528548 | Press Bush                     | 14   | 528558 | Gasket, 13 x 4 x 4mm | 23   | 528567 | Valve guide          |
| 6    | 528549 | Bush                           | 15   | 528559 | Screw                | 24   | 528568 | Cu-gasket            |
| 7    | 528550 | Washer                         | 16   | 528560 | Cu-gasket            | 25   | 528569 | Solenoid square base |
| 8    | 528551 | O-ring                         | 17   | 528561 | Jet                  | 26   | 528570 | Spring guide         |
| 9    | 528552 | Spring                         | 18   | 528562 | Filter               | 27   | 528571 | Spring               |
| 10   | 528553 | Commutator/cpl. (pict. 5 - 16) |      |        |                      |      |        |                      |

## Group No-Stop, Compact

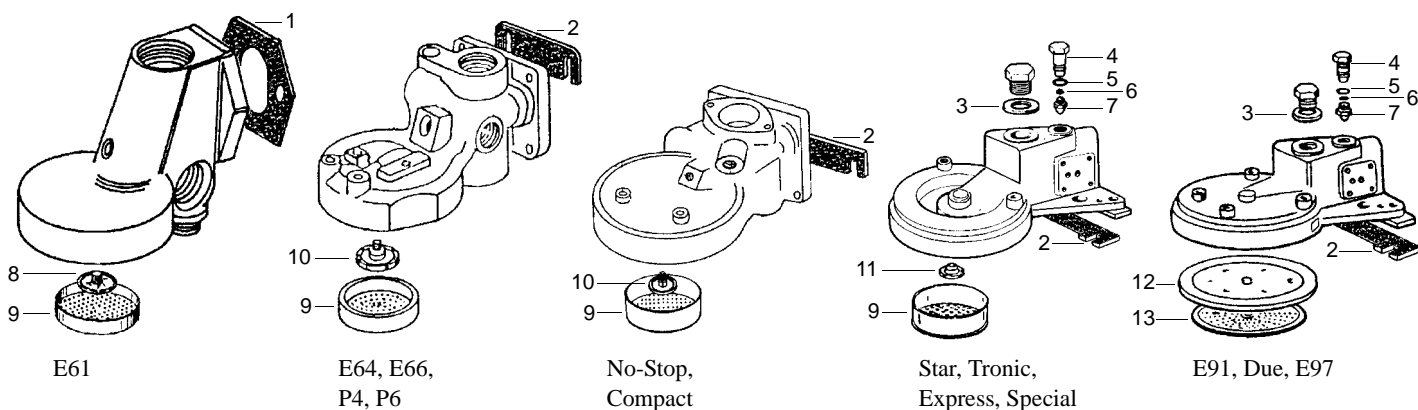
F

Suitable for Faema



| Item | Order  | Description          | Item | Order  | Description          | Item | Order  | Description     |
|------|--------|----------------------|------|--------|----------------------|------|--------|-----------------|
| 1    | 528572 | Cap                  | 10   | 528558 | Gasket, 13 x 4 x 4mm | 19   | 528587 | Spring guide    |
| 2    | 528573 | Lever handle         | 11   | 528581 | Valve guide          | 20   | 528588 | Gasket (teflon) |
| 3    | 528574 | Lever                | 12   | 528582 | Jet                  | 21   | 528589 | Valve           |
| 4    | 528575 | Lever                | 13   | 528562 | Filter               | 22   | 528590 | Spring          |
| 5    | 528576 | Stopper              | 14   | 528583 | O-ring               | 23   | 528591 | Thrust shaft    |
| 6    | 528577 | Bearing              | 15   | 528584 | Screw                | 24   | 528592 | Spring          |
| 7    | 528578 | O-ring               | 16   | 528585 | Shaft                | 25   | 528593 | Perlator        |
| 8    | 528579 | Spring               | 17   | 528586 | Valve, infusion      | 26   | 528594 | Funnel          |
| 9    | 528580 | Solenoid square base | 18   | 528566 | Spring               |      |        |                 |

**F** Group



| Item | Order  | Description |
|------|--------|-------------|
| 1    | 528115 | Gasket      |
| 2    | 528113 | Gasket      |
| 3    | 528514 | Gasket      |
| 4    | 528584 | Screw       |
| 5    | 528583 | O-ring      |
| 6    | 528562 | Filter      |
| 7    | 528582 | Jet         |

| Item | Order  | Description |
|------|--------|-------------|
| 8    | 529081 | Dispersion  |
| 9    | 529080 | Shower      |
| 10   | 529082 | Dispersion  |
| 11   | 529201 | Dispersion  |
| 12   | 529202 | Dispersion  |
| 13   | 529084 | Shower      |

Filter holder gaskets, filter



| Item | Order  | Description                             |
|------|--------|---|
| 1    | 528033 | Shim gasket, 71 x 68mm                  |
| 2    | 528030 | Filter holder gasket, 73 x57 x 8mm      |
| 2    | 528031 | Filter holder gasket, 73 x57 x 8,5mm    |
| 2    | 528032 | Filter holder gasket, 73 x57 x 9mm      |
| 2    | 528070 | Filter holder, 73 x 57 x 8mm, 3 notches |
| 3    | 529012 | Filter, 1 cup (6g)                      |

| Item | Order  | Description          |
|------|--------|----------------------|
| 3    | 529011 | Filter, 1 cup (7g)   |
| 4    | 529014 | Filter, 2 cups (12g) |
| 4    | 529013 | Filter, 2 cups (14g) |
| 5    | 529023 | Blank filter         |
| 6    | 529079 | Filter spring        |

## Filter holder



| Item | Order  | Description   |
|------|--------|---------------|
| 1    | 529040 | Filter holder |
| 2    | 529048 | Extension     |
| 3    | 529046 | Handle, E61   |
| 4    | 529047 | Handle, E64   |

| Item | Order  | Description |
|------|--------|-------------|
| 5    | 529066 | Washer      |
| 6    | 529067 | Srew        |
| 7    | 529113 | Cap         |



| Item | Order  | Description         |
|------|--------|---------------------|
| 1    | 529041 | Filter holder, M12  |
| 2    | 529045 | Handle/black, M12   |
| 3    | 529052 | Filter holder, E 98 |

| Item | Order  | Description       |
|------|--------|-------------------|
| 3    | 529044 | Handle/brown, M12 |

## Spouts



| Item | Order  | Description                 |
|------|--------|-----------------------------|
| 1    | 529002 | 3/8", 1 way, straight/short |
| 2    | 529001 | 3/8", 1 way, straight/long  |
| 3    | 529005 | 3/8", 1 way, curved/short   |
| 4    | 529003 | 3/8", 1 way, curved/long    |

| Item | Order  | Description                       |
|------|--------|-----------------------------------|
| 5    | 529004 | 3/8", 1 way, curved/closed        |
| 6    | 529008 | 3/8", 2 ways, distance 44mm       |
| 7    | 529007 | 3/8", 2 ways, distance 55mm/short |
| 8    | 529006 | 3/8", 2 ways, distance 55mm/long  |