

# *Spare parts suitable for:* **ITALCREM**

*Spare parts suitable for coffee machines*



## Solenoid valves

Scem/Parker



Item	Order	Description
1	370057	cpl., 3 ways, 230V AC
2	370060	cpl., 3 ways, with cable, 230V AC
3	370062	Solenoid square base



Item	Order	Description
1	370059	cpl., 3 ways, 1/4", 230V AC
2	370206	cpl., 1/8", 2 ways, 230V AC
3	371029	Magnetic coil, 230V AC
4	371033	Magnetic coil, with cable, 230V AC



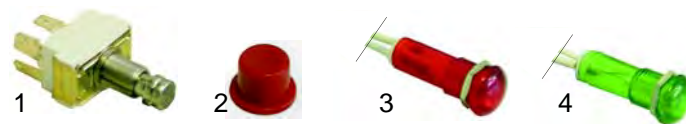
Item	Order	Description
1	371090	Plug
2	371095	O-ring (viton)
3	371100	O-ring (Silicon)

## Pressure switches, thermostats



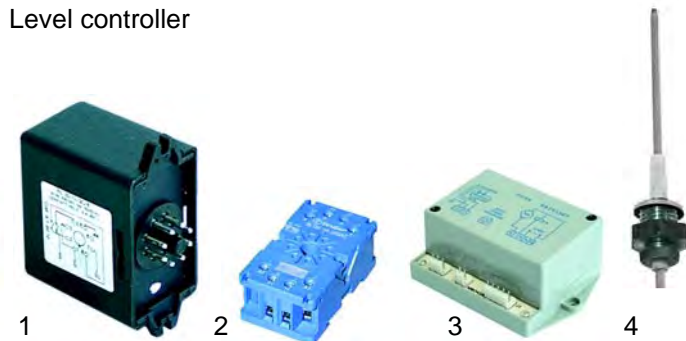
Item	Order	Description
1	541021	Pressure switch, 3 poles
2	390166	Safety thermostat, 3 poles

## Switches, lamps



Item	Order	Description
1	346084	Switch
2	346085	Button
3	359401	Lamp/red, 8mm, 230V
4	359400	Lamp/green, 8mm, 230V

## Level controller



Item	Order	Description
1	400237	Level controller (RL30/1E-2C/8)
2	380137	Base, 8 poles
3	400422	Level controller
4	400020	Level probe

## Relays



Item	Order	Description
1	380475	Relay, 230V

## Flow-meter



Item	Order	Description
1	400004	Flowmeter, 1/4"
2	400256	Plugs
3	400257	Flowmeter turbine
4	400258	Case gasket

## Key push buttons



Item	Order	Description
1	400447	Key push button
2	400448	Key push button
3	400449	Key push button

## Elements

With immersion socket



Item	Order	Description
1	417116	1 group, 1800W, 230V
2	417001	2 group, 2600W, 230V
3	417109	3 groups, 3700W, 230V
4	528488	Element gasket (klingerit)
4	528002	Element gasket (teflon)



Item	Order	Description
1	417120	1 group, 2500W, 230V
2	417121	2 group, 1000W, 230V
3	417122	2 groups, 1500W, 230V
4	417123	3 groups, 1500W, 230V
5	417124	3 groups, 2500W, 230V
6	528008	Element gasket (klingerit)
6	528740	Element gasket (teflon)

## Boiler gaskets



Item	Order	Description
1	528166	Gasket (klingerit)
2	528741	Gasket (teflon)

## Manometer



Item	Order	Description
1	541242	Manometer, 0 - 3 bar (101)
2	541243	Manometer, 0 - 24 bar (101)



Item	Order	Description
1	541244	Manometer, 0 - 3 bar (88)
2	541246	Manometer, 0 - 12 bar (88)
3	541245	Manometer, 0 - 24 bar (88)

## Valves

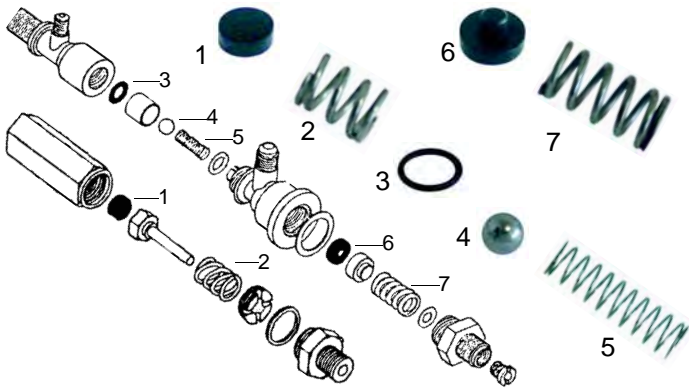


Item	Order	Description
1	529312	Safety valve, 1,8 bar, 3/8"
2	529316	Safety valve/sealed, 1,8 bar, 3/8"
3	529303	Empty valve (stainless steel), 1/4"
4	529361	Cu-gasket, 1/4"
5	529349	Cu-gasket, 3/8"



Item	Order	Description
1	529317	Expansion valve
2	529345	Retention valve, 3/8"
3	529323	Expansion- and retention valve





Item	Order	Description
1	528742	Gasket
2	528743	Spring
3	528744	O-ring
4	528419	Ball (stainless steel)
5	528392	Spring
6	528425	Gasket
7	528424	Spring



Item	Order	Description
4	528742	Gasket
5	528400	O-ring
6	528743	Spring
7	528747	Gasket

### Taps

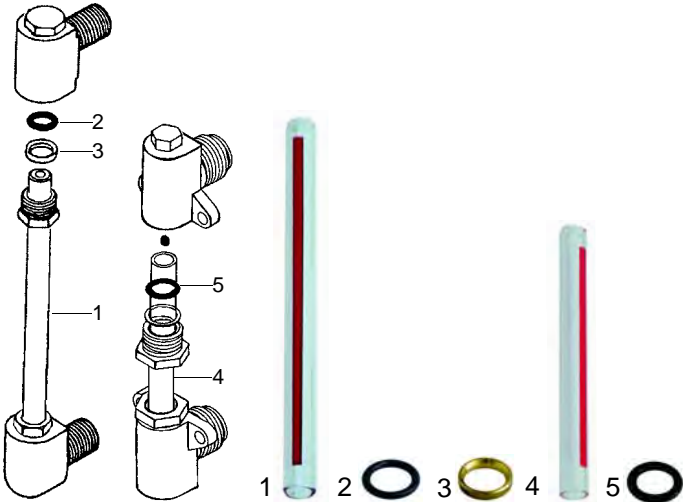


Item	Order	Description
1	528748	Tap complete, steam/water

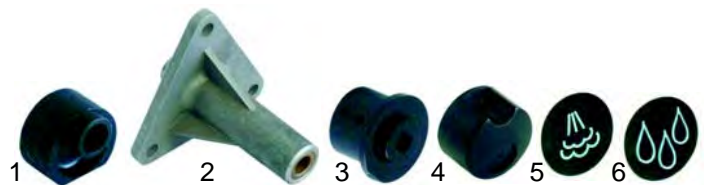


Item	Order	Description
2	528742	Gasket
3	528749	Spring
4	528750	Gasket

### Level glass

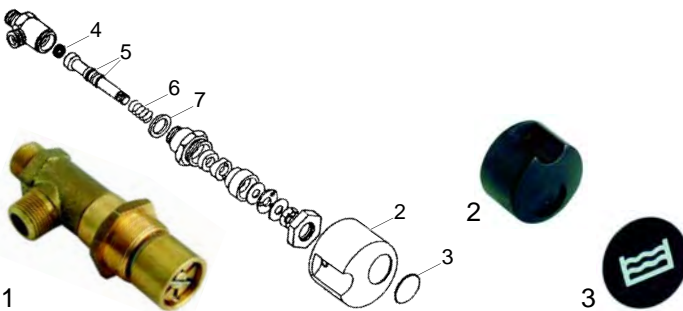


Item	Order	Description
1	529429	Level glass
2	528745	O-ring
3	528682	Press washer
4	529387	Level glass
5	528583	O-ring



Item	Order	Description
1	528751	Eccentric
2	528752	Holder
3	528753	Fitting
4	111046	Knob
5	111048	Cap/steam
6	111049	Cap/water

### Water inlet valve



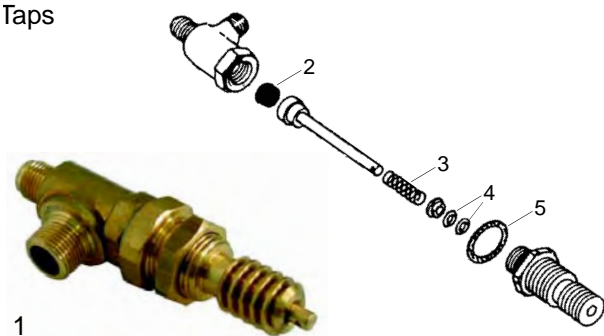
Item	Order	Description
1	528746	Water inlet valve/cpl.
2	111046	Knob
3	111047	Cover

## Pipes



Item	Order	Description
1	529684	Steam pipe/right
1	529685	Steam pipe/left
2	529679	Water pipe
3	528754	Valve
4	528755	Spring
5	528756	Washer
6	528745	O-ring

## Taps

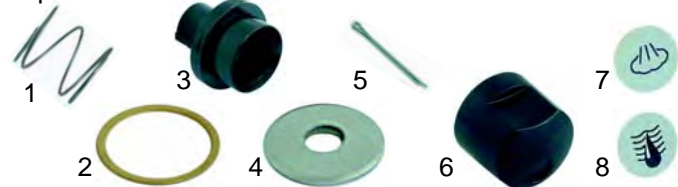


Item	Order	Description
1	528757	Tap complete, steam/water



Item	Order	Description
2	528398	Gasket
3	528484	Spring
4	528400	O-ring
5	528401	Gasket

## Taps



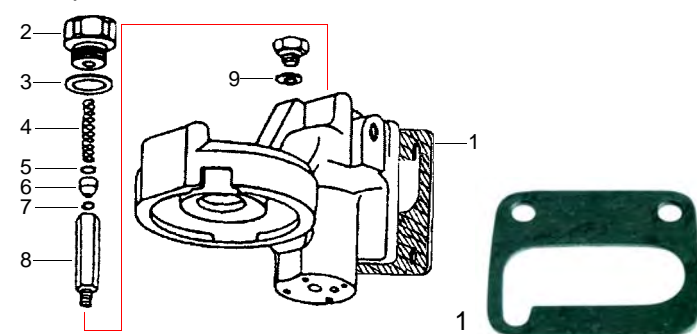
Item	Order	Description
1	528758	Spring
2	528759	Washer
3	528760	Bush
4	528761	Washer
5	528762	Cotter
6	111063	Knob
7	111064	Cap/steam
8	111067	Cap/water

## Pipes

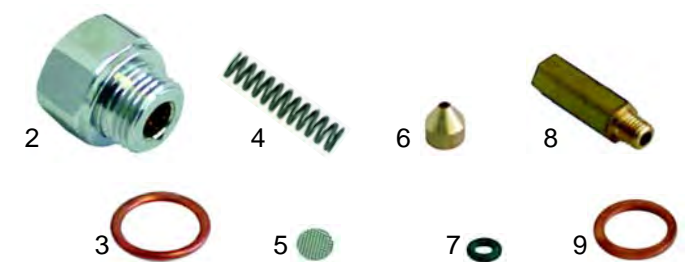


Item	Order	Description
1	529686	Steam pipe
2	529687	Water pipe
3	528401	Gasket
4	528184	Spring
5	528653	Washer
6	528654	Bush (nylon)
7	528655	O-ring

## Group



Item	Order	Description
1	528763	Group gasket



Item	Order	Description
2	528659	Ending cap
3	528520	Gasket
4	528668	Spring
5	528669	Filter
6	528670	Jet
7	528765	O-ring (viton)
8	528766	Lengthening, M6
8	528767	Lengthening, M8
9	528662	Cu-Gasket

## Shower



Item	Order	Description
1	529081	Dispersion
2	529080	Shower

## Filter holder gaskets



Item	Order	Description
1	528033	Shim gasket, 73 x 59mm
2	528030	Filter holder gasket, 73 x 57 x 8mm
2	528031	Filter holder gasket, 73 x 57 x 8,5mm
2	528032	Filter holder gasket, 73 x 57 x 9mm
3	529079	Filter holder spring

## Filters



Item	Order	Description
1	529021	Filter, 1 cup (7g)
2	529022	Filter, 2 cups (14g)
3	529023	Blank filter

## Filter holder



Item	Order	Description
1	529054	Filter holder
2	529111	Filter holder handle
3	528693	Srew, M8 x 20



Item	Order	Description
1	529055	Filter holder, M10
2	529053	Filter holder handle, M10

## Filters



Item	Order	Description
1	529012	Filter, 1 cup (6g)
1	529011	Filter, 1 cup (7g)
2	529014	Filter, 2 cups (12g)
2	529013	Filter, 2 cups (14g)
3	529023	Blank filter

## Filter holder



Item	Order	Description
1	529150	Filter holder
2	529112	Handle
3	529123	Screw



Item	Order	Description
1	529041	Filter holder, M12
2	529045	Filter holder handle, M12

## Spouts



Item	Order	Description
1	529001	Spout 3/8", one way long
2	529003	Spout 3/8", one way curved
3	529007	Spout 3/8", two way short